

***Notes:**

The item should be 3D printed with black PLA and best done using Ultimaker 3 Extended

For extrusion type 3D printers, the recommended layer height is 0.1mm.

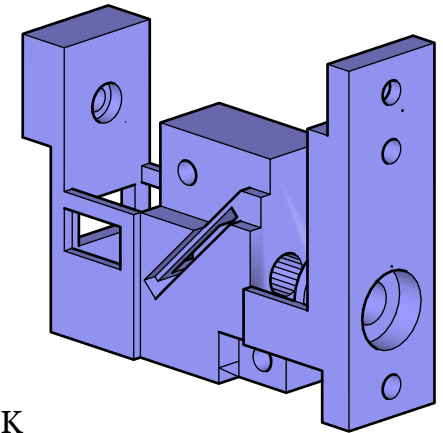
To check validity of the 3d printed output, the cuvette holder should fit as per the assembly instructions at the CN0503 user guide.

Reference Links:

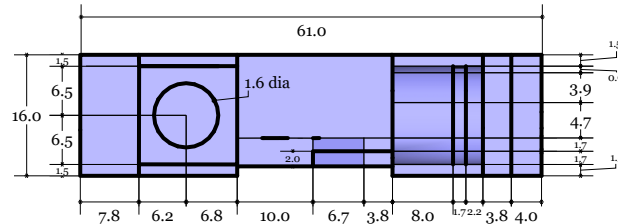
CN0503 User Guide: <https://wiki.analog.com/resources/eval/user-guides/circuits-from-the-lab/cn0503>

Assembly Guide Video: https://www.youtube.com/watch?v=E_8bHC4Af2E

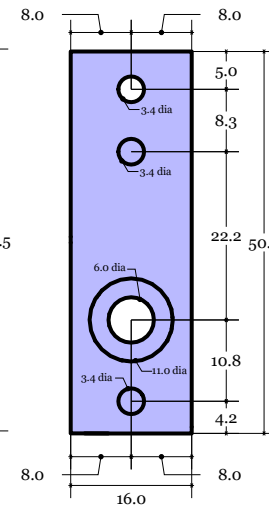
ISO



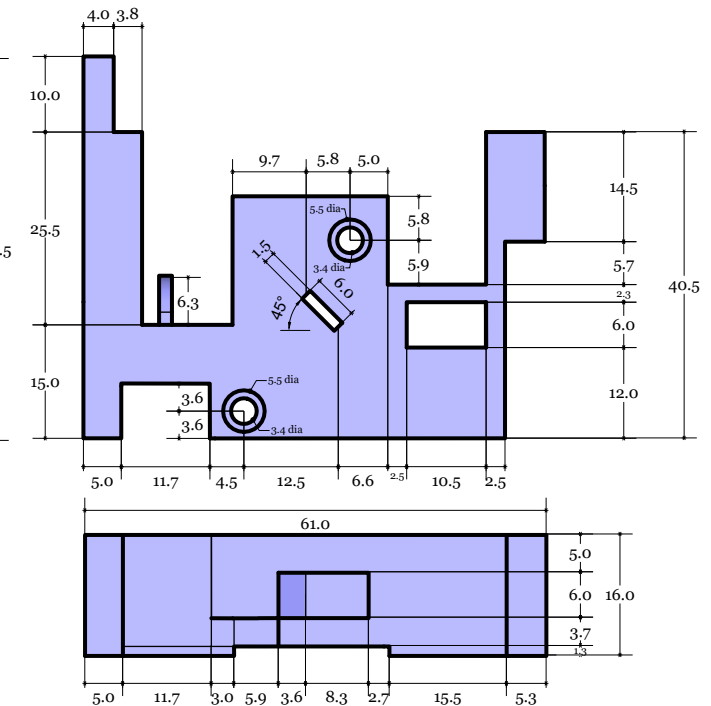
TOP



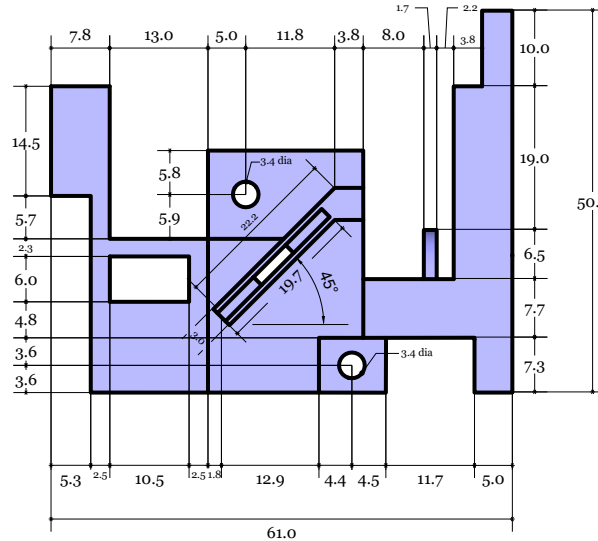
RIGHT



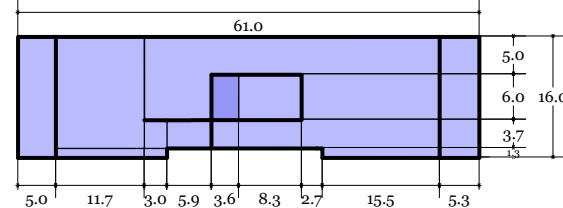
BACK



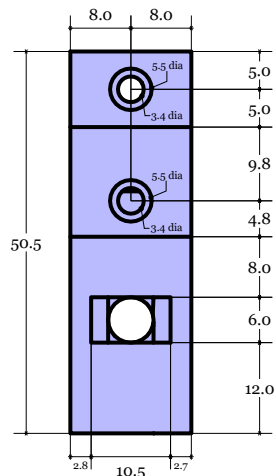
FRONT



BOTTOM



LEFT



3D Printed Cuvette Holder
for EVAL-CN0503-ARDZ

Scale: 1:1

Dimension unit: millimeters

Tolerance: 0.2mm

MECH-CUVETTEHOLDER-3DP

Designer: Angelo Nikko Catapang

REVISIONS

	MM/DD/YY	REMARKS
1	05/12/2020	Initial version
2	--/--/--	...
3	--/--/--	...
4	--/--/--	...
5	--/--/--	...

01

A